

HD IR MINI PTZ IP CAMERA

Quick installation guide V2.0.0

warranty card

Name: _____ Date: _____
 Model: _____ user: _____
 Address: _____ contact : _____
 Tel : _____ zip code : _____
 Dealer: _____ Fax : _____
 Tel : _____ contact : _____

Thank you for buying our product , Certificate card of warranty .

Warranty time Guarantee Item :

- This Warranty card apply for all of our company product .
- In the fixing period, please feel free to contact with us if there is any break-down in quality about the product.
 - Please send back the warranty card with all contents filled to our company after purchasing, and your product can be maintained or replaced for free. Otherwise, we refuse to handle
 - Guarantee server is subject to this card information ,please seriously fill it .
 - Following situation ,we will not guarantee :

- * By man-make damage .
- * Device damage due to use in inadequacy Environment .
- * Device damage by force majeure .
- * losing warranty card .
- * Warranty period has expired .



Preface

summary :

This document describes in detail about our cameras' unpacking inspection, device structure, Quick configuration tool, WEB browser etc.

Signal instruction

Signal	instruction
	High potential damage. If irresistible, it will harm users with high damages
	Intermediate or low potential damage. If irresistible, it will harm users with low damages.
	Potential damage. If neglected, it may cause damages on devices, data lost, weaken performance, or unforeseeable results.
	Sensitive devices for static.
	High voltage.
	High laser radiation.
	Helps for solving problems or saving your time.
	Extra information for the contents.

Important Safeguards and Warnings

In the document, the symbols may appear with meanings as flows:
 Please read the following safeguard and warnings carefully before you use this series product!
 Please keep this user' s manual well for future reference!

Notice:

1.1 . Electrical safety

*All installation and operation here should conform to your local electrical safety codes. The power shall conform to the requirement in the SELV (Safety Extra Low Voltage) and the Limited power source is rated 12V DC in the IEC60950-1. (Refer to general introduction)

*Please install the proper power cut-off device during the installation connection.

*Before running the camera, Pls confirm the power is right.

*Pls protect power cable being trampled and squeezed, especially in the plug, socket, and exit junction.

1.2 Environment

*Avoid shooting very bright objects directly into the camera (such as the sun or light), otherwise, it may causes over explosion phenomenon(this is no device problem) or may bring damage to the camera' s CCD (or CMOS)

*Please transport, use and store the camera under the allowable temperate and humidity range. Don't put the device under the wet, dusty, extremely hot, cold, strong electromagnetic radiation or unstable lighting conditions etc.

*Do not allow the water and other liquid falling into the camera.

*Please keep the sound ventilation.

*No heavy stress, violent vibration or water splash are allowed during transportation, storage.

*When transporting the camera, it should use company packing or use same quality material packing.

*Thunder-proof device is recommended to be adopted to better prevent thunder

1.3 Daily Maintenance

*Do not remove the camera, there is no parts inside which can be repaired by users themselves.

*Do not touch the CCD (CMOS) optic component, you can use the blower to clean the dust on the lens surface. If necessary, please gently clean the dust with dry cloth which is slightly wet with alcohol.

*Please use soft cloth to clean the device, For heavy dirty, please use soft taking litter detergent to clean, and keep dry .

*Please don' t use Alcohol, Benzene, Diluent, such as Volatile solvent or Irritant, abrasiveness cleanser to clean the device. Otherwise, will damage the device, degrade the performance of camera .

*The material of front cover is optic component, please do not touch or clean the surface, for cleaning, pls use professional optical cleaning method. Wrong cleaning method (e.g. directly cleaning with cloth) may result in a bad effect on the infrared function of the camera.

warning

*Be sure to use all the accessories recommended by manufacturer and the installation and repair should conduct by professional.

*Please make sure the CCD (CMOS) component is out of the radiation of the laser beam device. Otherwise it may result in CCD (CMOS) optical component damage .

The Company Statement

*Because our company continuously adopt new technologies, product parameters change without prior notice. Some function of products may have slight difference before and after.

*The updated procedures and additional instruction document, please contact the company's customer service department.

*If there is any problems when using, pls contact the supplier or the company's customer service department.

*Because of the real environment and other unstable factors, some data may be different with instruction guide, if there is any questions and disputes, please take company' s saying as final explanation.

*Please follow instruction guide, we are not liable for any problems caused by man -made damage, This user' s manual is for reference only. Slight difference may be found in user interface .

1 Checking Box

1.1 Checkingstep

When user received the bullet PTZ Camera ,please check whether have obviously damage in appearance of equipment . Packing material can stand accidental Crash on transport . please open the package and check all the components are included. Please reference following form .

Accessories

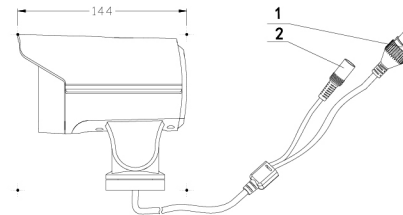
Be sure to use all the accessories recommended by manufacturer.

Accessory Name	Amount
Network Camera Unit	1
Quick Start Guide	1
CD	1

2 Structure

2.1 Multiplefunction Combination Cable

You can refer to the following figure for multiple-function combination cable information. See Figure .

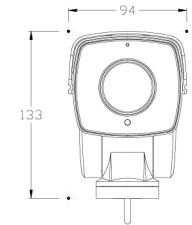


Picture 2 - 1 Cable

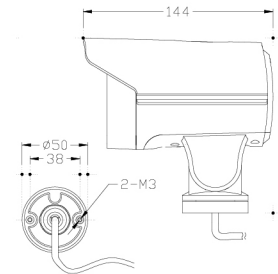
Please refer to the following sheet for detailed information.

SN	Port name	Function	Connection	Note
1	LAN	Network port	Ethernet port	Connect to standard Ethernet cable
2	DC12V	Power input port	-	Power input port. Input DC 12V

2.2 Structure size sketch map (Unit : mm)

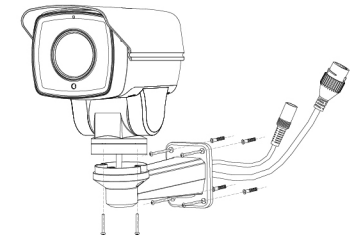


Picture 2-2 Dimension



Picture 2-3 Dimension

3 Device Installation



Picture 3-1 Device installation

Important

The installation wall shall min sustain 3X weight of the bracket and camera.

Please follow the steps listed below to install the device.

Step 1: Install bracket of camera.

For cement wall surface:

1. Installation expansion bolts (Insert the expansion bolt into the bracket holes)
2. Put network cable through bracket inner .
3. Use the crosshead screwdriver to fix the adjust screw firmly .

For woodiness surface don' t need install expansion bolt ,use ~~cross~~ screwdriver fix firmly .

Step 2: Install camera

Insert the expansion bolt into the installation holes. Take the screws from the accessories bag and then use them to secure the device on the installation surface of the wall or the ceiling.

Step3: Use the crosshead screwdriver to fix the adjust screw , confirm camera firmly .

Step 4 : Use IE to Control the camera .

Atten :

Please don' t use hand adjust camera Structure .This operation will damage the device structure .

After Finish install , Please take care about waterproof of the device , The extension line must go down then bend UP .Ensure water can not alone the extension line to the camera .

4 Quick Configuration Tool

Instruction:

Quick configuration tool can search current IP address, modify IP address. At the same time, you can also use it to upgrade the device.

Note:

The tool only applies to the IP addresses in the same segment

Step 1 Double click the Client icon, click "Refresh (auto refresh every 15 seconds)" on the device management interface, you can see all device IP addresses, see Figure 1.

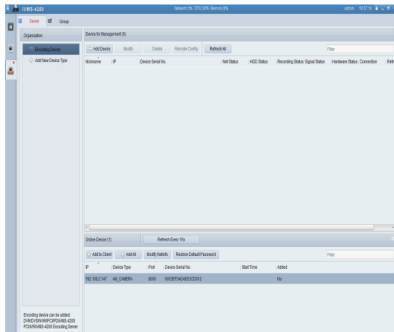


Figure 1 Device manage interface

Step 2 : Double click the IP address you want to modify, you can see an interface is shown as in Figure 2, input the administrator' s password (default password: admin) after modified the IP address, then click "OK" .



Figure 2 IP Modify interface

Step 3 : Select one IP, click "Add to Client" , you can see a interface (Figure 3). Input an alias (choose a random name), user name and password (the user name and password of the IP). Tick "Import to Subgroup" , then click "Add" .

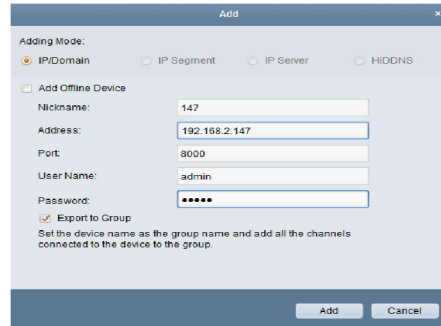


Figure 3 IP add interface

Step 4 : Click main preview, you can see the main preview interface, choose the default view you need on the left (Figure 4).

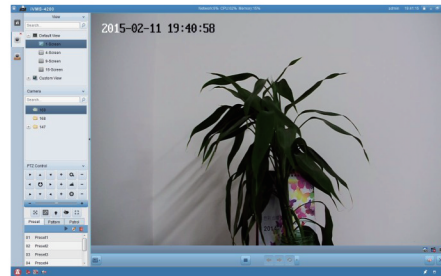


Figure 4 Preview Interface

5 WEB Operation

For detailed device parameters setting and system upgrade, please refer to the User' s Manual attached with the camera.

5.1.Introduction

This series PTZ camera products support the Web access and management via PC Web includes several modules: Monitor channel preview, set alarm etc.

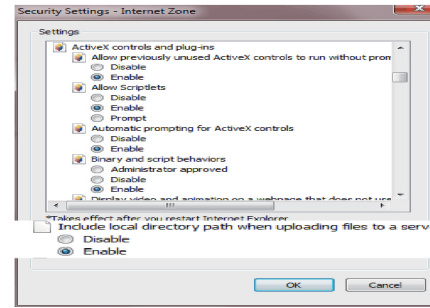
5.2System Login

5.2.1 Network connection

Step 1 Make sure the PTZ camera has connected to the network properly.

Step 2 Please set the IP address, subnet mask and gateway of the PC and the network camera respectively (If there is no routing devices in the network, please assign the IP address of the same network segment; If there is router, please set the corresponding gateway and subnet mask). PTZ camera factory default IP address is 192.168.0.99. Step 3 Click start, type "cmd" in the search programs and files, then press enter to use order ping ***. ***. ***. (PTZ camera IP address) to check connection is OK or not.

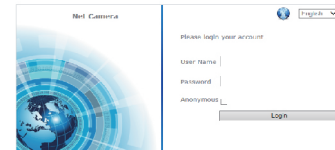
5.2.2. Plug-in Installation If it is your first time to use the network vedio products, you need to download ActiveX file, Need to make appropriate settings in the IE before downloading to ensure the normal download controls. It is recommended to use IE browser,



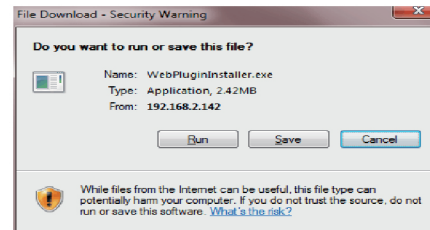
5.2.3 Login WEB

Step 1 Open IE and input PTZ camera IP address in the address bar

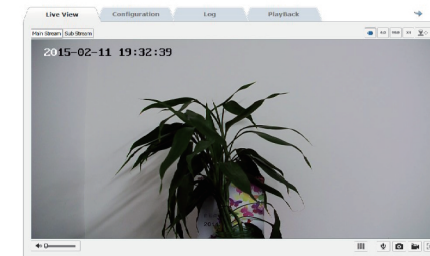
Step 2 After connection, as shown below, please input your user name and password, and then click the login button to login. The factory default administrator user name is admin and password is admin.



Step 3 After you logged in, please install the WEB plug-in for the prompt, you can see the specific WEB installation in the manual. (Note: please close the browser when you install the plug).



Step 4 After the plug is installed, the display interface is shown in figure



For the specific WEB browser usage, please refer to the instruction manual.

6 Appendix: Toxic or Hazardous Materials or Elements

Component ¹⁾	Toxic or Hazardous Materials or Elements ²⁾					
	Pb ³⁾	Hg ³⁾	Cd ³⁾	Cr VI ³⁾	PBB ³⁾	PBDE ³⁾
Circuit board assembly ⁴⁾	○ ⁵⁾	○ ⁵⁾	○ ⁵⁾	○ ⁵⁾	○ ⁵⁾	○ ⁵⁾
Housing ⁴⁾	○ ⁵⁾	○ ⁵⁾	○ ⁵⁾	○ ⁵⁾	○ ⁵⁾	○ ⁵⁾
Connection Cable ⁴⁾	○ ⁵⁾	○ ⁵⁾	○ ⁵⁾	○ ⁵⁾	○ ⁵⁾	○ ⁵⁾
Packaging components ⁴⁾	○ ⁵⁾	○ ⁵⁾	○ ⁵⁾	○ ⁵⁾	○ ⁵⁾	○ ⁵⁾
Accessories ⁴⁾	○ ⁵⁾	○ ⁵⁾	○ ⁵⁾	○ ⁵⁾	○ ⁵⁾	○ ⁵⁾

○¹⁾ Indicate that the concentration of the hazardous substance in all homogeneous materials in the parts is below the relevant threshold of the SJ/T11363-2006⁴⁾ standard.⁵⁾

×¹⁾ Indicate that the concentration of the hazardous substance of at least one of all⁴⁾ homogeneous materials in the parts is over the relevant threshold of the⁵⁾ SJ/T11363-2006 standard. In the usage period, if users use this product correctly,⁴⁾ these materials will not be harmful to users and their possession. Users are not⁴⁾ allowed to deal with these materials or components. Please recycle these materials⁴⁾ to corresponding departments ruled by laws.⁵⁾